

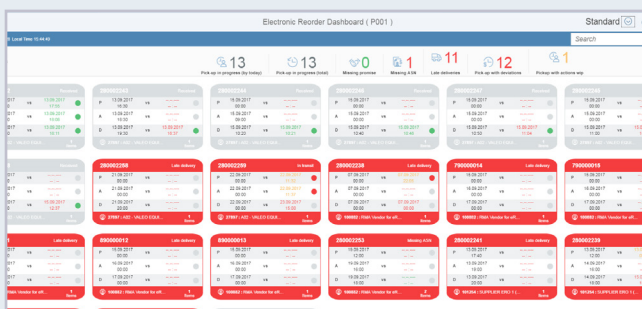


# Jumpstart your digital transformation with our SAP FIORI Manufacturing & Supply team.

## WHY?

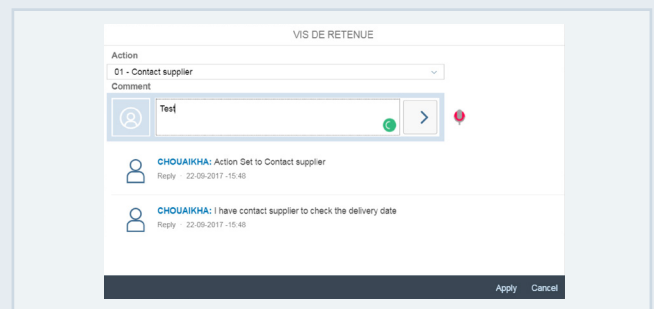
1. Increase your productivity working directly on-shopfloor
2. Detect and react rapidly to abnormal situations
3. Extend the coverage of your SAP ERP footprint
4. Increase user satisfaction with friendly UI
5. Prepare the upcoming transformation to S/4 HANA

## SAMPLE OF OUR REALIZATIONS



### Incoming deliveries' dashboard

Follow-up and track supplier promise and delivery respect with our custom UI5 tile view. Evaluate upcoming impacts on projected coverage. Manage Quick Response Action Plan to handle deviations until resolution.



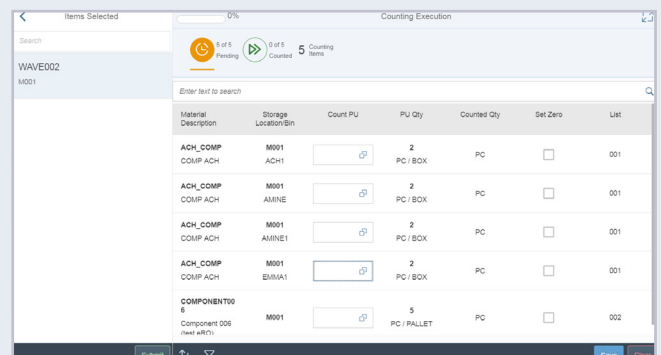
### Plant Maintenance Apps

Create, monitor and process notifications. Speed your report leveraging voice recognition. A complete suite of apps made to support improving maintenance team productivity.



### Supplier Service Rate reporting

Follow-up and analyze your supplier service rate and its adherence to the pre-defined protocol. Identify your best 5 / worst 5. Drilldown to analyze and possibly adjust its scoring to consider variety of events.



### Inventory counting

Organize, schedule and perform your periodic inventory counting efficiently on tablet or mobile devices.

# BUSINESS EXPERTISE FROM PLANNING TO EXECUTION

---

## Strategic planning

- Sales & Operations Planning
- Budget
- Sales forecast / MTP

## Manufacturing execution

- Line feeding, Production confirmation
- Work order management
- Process control, PLC integration,
- Traceability / Lot tracking
- Labor management
- Time tracking
- Serial number

## Demand & supply planning

- Demand integration management
- EDI / JIT / JIS inbound
- Order processing
- Demand & Supply planning
- Network planning, MPS, MRP
- Availability-To-Promise
- Material budget
- Product costing

## Logistics execution

- Receiving
- Put-away / stock transfer
- Warehouse management
- Inventory counting
- Shipping
- Labeling & identification
- Billing, Self-billing, intercompany reconciliation

## Production scheduling

- Detailed scheduling
- Sequencing
- JIS, JIT outbound
- Supplier KANBAN
- Account receivables, Account payables

## Asset management

- Maintenance optimization & agility
- Maintenance preventive & predictive
- Quality management
- Assets intelligence network

**The alliance between Business & Technical expertise to achieve a successful implementation with SAP FIORI.**

# SAP FIORI TECHNICAL EXPERTISE WITH SILVEO IN A NUTSHELL

---

- UX design
- SAP ECC expertise background
- SAP UI5 custom developments with integration of custom framework
- Experienced with OData developments from SAP ECC
- S/4 HANA & Hana development (XSodata service, XSJS Service)
- Fast implementation methodology with prepackaged solution



**We know what you need on the shopfloor and how to deliver it.**

